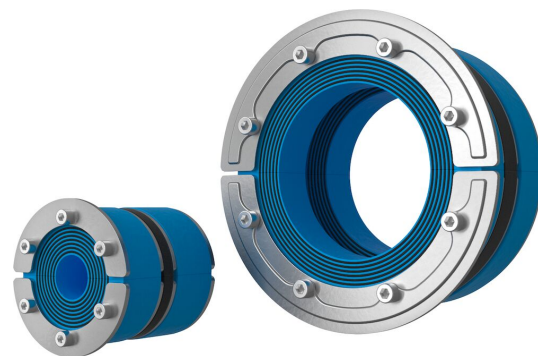




Bague Roxtec RS PPS/S

Solution étanche pour tuyauteries en plastique léger pour une installation d'un seul côté.

Le Roxtec RS PPS/S est une bague qui protège les passages de tuyauteries en plastique dans les zones classées résistantes au feu, telles que les plates-formes et cloisons étanches en acier. La bague assure un blocage complet de la fumée, du feu et de l'eau en cas d'incendie et elle est homologuée pour une installation d'un seul côté. Le passage s'adapte à des tuyauteries de différentes tailles grâce aux couches pelables. Pour tuyauteries en plastique de 119 mm maximum.



- Léger
- Installation facile et rapide
- S'adapte à différents diamètres de câbles et de tuyaux

Caractéristiques du produit



Coupe-feu



Étanche à l'eau



Étanche au gaz

Structure d'installation



Métal



Béton

Type de fixation



Trou existant



Douille existante

Classements et certificats

Feu

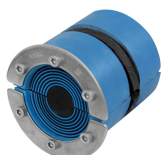
- CLASSE A conformément au code FTP IMO 2010
- Classement E/EI selon EN 45545 E60

Étanchéité

- Gaz: 2 bars (catastrophique)
- Eau: 4 bars (catastrophique)

Éléments d'étanchéité

Éléments d'étanchéité



Bague RS PPS/S



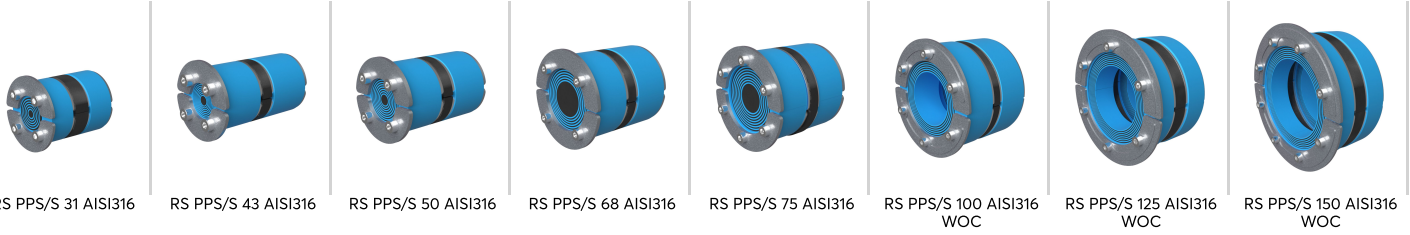
Lubrifiant Roxtec

Pour plus d'informations, veuillez consulter [roxtec.com](https://www.roxtec.com).



Kits de passage préconfigurés

mm/kg



Titre	Configuration	Dimensions d'ouverture Ø	Poids	N° art.
RS PPS/S 31 AISI316	1x (4.0-17.0)	31 - 32	0.09	PPSS000003121
RS PPS/S 43 AISI316	1x (4.0-23.0)	43 - 45	0.29	PPSS000004321
RS PPS/S 50 AISI316	1x (8.0-30.0)	50 - 52	0.37	PPSS000005021
RS PPS/S 68 AISI316	1x (26.0-48.0)	68 - 70	0.6	PPSS000006821
RS PPS/S 75 AISI316	1x (24.0-54.0)	75 - 77	0.6	PPSS000007521
RS PPS/S 100 AISI316 WOC	1x (48.0-70.0)	100 - 102	0.8	PPSS000010021
RS PPS/S 125 AISI316 WOC	1x (66.0-98.0)	125 - 127	1.4	PPSS000012521
RS PPS/S 150 AISI316 WOC	1x (93.0-119.0)	150 - 152	1.6	PPSS000015021

The product information provided by Roxtec does not release the purchaser of the Roxtec system, or part thereof, from the obligation to independently determine the suitability of the products for the intended process, installation and/or use. Roxtec gives no guarantee for the Roxtec system or any part thereof and assumes no liability for any loss or damage whatsoever, whether direct, indirect, consequential, loss of profit or otherwise, occurred or caused by the Roxtec systems or installations containing components not manufactured by an authorized manufacturer and/or occurred or caused by the use of the Roxtec system in a manner or for an application other than for which the Roxtec system was designed or intended. Roxtec expressly excludes any implied warranties of merchantability and fitness for a particular purpose and all other express or implied representations and warranties provided by statute or common law. User determines suitability of the Roxtec system for intended use and assumes all risk and liability in connection therewith. In no event shall Roxtec be liable for indirect, consequential, punitive, special, exemplary or incidental damages or losses. The Roxtec products are offered and sold in accordance with the conditions of the Roxtec General Terms of Sales. The latest version of the Roxtec General Terms of Sales can be downloaded from <https://www.roxtec.com/en/about-us/about-roxtec/general-terms-of-sales/> We reserve the right to make changes to the product and technical information without further notice. Any errors in print or entry are no claims for indemnity. The content of this publication is the property of Roxtec International AB and is protected by copyright. This document was generated on: 2024-04-06